

IMBERHORNE
SCHOOL

Sixth Form Prospectus

2025/2026

Compassion □ Achievement □ Respect □ Endeavour

The cornerstones of our learning community

Welcome to Sixth Form at Imberhorne School



Antony Nabar at Leeds University studying Biomedical Sciences

“Going to Imberhorne Sixth Form was one of the best decisions I have made. The excellent support by all staff members, with my study’s and applying to university were unmatched. The opportunities outside of the classroom were incredible, I still think about my trip to Tanzania on a daily basis.”

“I loved my time at Imberhorne Sixth Form. I really enjoyed the social events the school hosted. The pastoral and teaching staff are so supportive. Applying to University was a lot less stressful thanks to all their help.”



Mia Mackie at Bristol University studying Biomedical Sciences

“Imberhorne Sixth Form feels very communal which allows students to get the most out of themselves, additionally there is also brilliant support available. Their guidance through careers options and pathways was phenomenal. I thoroughly enjoyed my subjects, working closely with other students and the teachers, while also embracing the independence of Sixth Form which was the perfect next step and very beneficial for later life.”



Mason Excell at The West of England studying Economics

Imberhorne is a successful, happy community where staff are committed to developing the full potential of all students. Our excellent academic record along with the great emphasis we place on personal development creates a thriving and vibrant school community.

We believe we provide students in the Sixth Form with an education of the highest quality in a stimulating and supportive environment. Upon joining our Sixth Form, students are embarking on a different journey with new and varied challenges. Students will be prompted to think and work hard; higher level study is demanding.



We focus on preparing students for the next step in life after Sixth Form. A significant number progress to university, pursuing a wide range of courses at many highly rated institutions. We are equally proud of students who follow different pathways where apprenticeships or alternative educational routes have afforded them some wonderful opportunities. Most important to us is the fact that all students are able to follow the path best suited to them as individuals.

HIGH EXPECTATIONS ACHIEVEMENT & ENDEAVOUR

Students learn best when they are happy, encouraged and challenged. Staff in the school know the students well and know how to get the best out of them. Students find they are often in smaller than average classes meaning that they experience a high degree of personal interaction with teachers. We are proud of our consistent academic record in the Sixth Form.

This grows out of high expectations and the outstanding teaching we provide, we have a broad and varied curriculum, at the core of which is a strong academic spine.

Significant numbers of students study the Sciences as well as Maths, English and Humanities subjects. Alongside this we have a vibrant and successful curriculum with additional strengths in other areas such as Languages, Sport and a wide variety of vocational options.

We expect students to be active participants in their learning and want them to question, discuss and reflect together in lessons as well as beyond the classroom. Students also need to have resilience and be prepared to persevere.

COMPASSION, GUIDANCE & SUPPORT

We believe that the well-being of all is at the heart of our community. We have a well developed pastoral system and pride ourselves on the level of personal care we provide for all our students. Pastoral Leaders, Personal Mentors and a Pastoral Support Assistant oversee their welfare and academic progress. Personal Mentors are often the first point of contact for parents when making enquiries about pastoral or academic issues.

Our experienced Sixth Form team welcome communication with students and parents, treating all matters fairly and sensitively. We provide outstanding guidance and support for students, creating opportunities to attend Higher Education Conferences and Careers Fairs as well as having access to specialist careers advice. We believe one of our key responsibilities is to help prepare all our students for the next stage of their journey beyond the Sixth Form.

Every student has regular weekly contact with their Personal Mentor. A high level of individual care and support for students is a hallmark of life in our Sixth Form. A school Sixth Form provides a smaller, more intimate yet very dynamic educational community in which we believe our students thrive.



RESPECT, PARTICIPATION & PERSONAL DEVELOPMENT

As part of our well-being focus, we encourage students in the Sixth Form to take on leadership roles in the school, this can range from supporting the student council to providing mentoring and guidance to younger students. We seek to instill a sense of responsibility in our students and encourage them to be role models for others.

We offer an enrichment afternoon once a week, this provides opportunities for students' personal development. Students can participate in sports activities, undertake volunteering or engage with other enrichment opportunities on offer. Life in the Sixth Form should provide students with a broad perspective and encourage participation in our community.

All students will have a Personal Mentor, they will meet regularly with their mentor, throughout the year.

Through this programme, they will receive guidance on how to best manage their time and workload, helping them become successful and reflective learners.

In the Summer Term of Year 12, students may complete a week long work experience placement. In addition to this, we provide many opportunities throughout the year to meet with employers and receive futures advice.

The Performing Arts are very strong in the school. There are many opportunities for students to participate in school productions or to perform as part of the courses they choose to study. These are outstanding occasions and serve to inspire parents and students alike.

There is a vibrant extra curricular life to the school. We offer students the opportunity to take part in several different trips and activities, perhaps most notably our Swedish and Tanzanian Exchange Programmes. These are special and long standing relationships that have benefited many students over the years.

All of these experiences enrich the school community, but critically help the students learn how to express themselves, work with and support others, show responsibility and become increasingly self assured members of our community.



WE OFFER A WIDE RANGE OF COURSES...

A Level Courses

- 10. Art
- 10. Biology
- 11. Chemistry
- 11. Computer Science
- 12. Design & Technology
- 12. Drama & Theatre
- 13. Economics
- 13. Electronics
- 14. English Language
- 14. English Literature
- 15. Film Studies
- 15. French
- 16. Geography
- 16. History
- 17. Maths
- 17. Core Maths
- 18. Further Maths
- 18. Philosophy
- 19. Photography
- 19. Physics
- 20. Politics
- 20. Psychology
- 21. Sociology
- 21. Spanish

Applied Courses

- 23. Business Single (BTEC Award)
- 23. Business Double (BTEC Award)
- 24. Criminology (WJEC)
- 24. Food Science & Nutrition (WJEC)
- 25. Health & Social Care (CTEC)
- 25. Music (BTEC)
- 26. Creative Media (BTEC)
- 27. Performing Arts (BTEC)
- 27. Applied Science (BTEC)
- 28. Sport & Exercise Sciences (BTEC)
-
- 29. Entry Requirements
-



SIXTH FORM (16-19) PATHWAYS

Please note: A student's qualifications may not fit exactly with the entry requirements for these two pathways. A member of the Sixth Form team will discuss appropriate courses at the time of enrolment. Alternative courses to GCSE e.g. BTEC can be included to meet entry requirements.

A student's GCSE grade in Maths and English will partly determine the choice of A-Levels that can be offered (*please see entry requirements*). Students who have not achieved Grade 4 in GCSE Maths and/or English Language must enrol on these courses and may have to change an option at enrolment to facilitate this.

PATHWAY OPTIONS	MINIMUM ACADEMIC ENTRY REQUIREMENTS	POST-16 COURSES AVAILABLE	OPTIONS FOR STUDENTS AFTER THIS PATHWAY IS COMPLETED
A LEVEL PATHWAY (2 years)	7 x 9 – 4 GCSE grades mainly at Grade 6 or above + Maths and English Language at Grade 4 or above	Three A Level courses or Vocational Level 3 courses	Then progress to... (1) Foundation or Degree level courses in Higher Education (e.g. via UCAS) (2) Level 3 or 4 courses at other institutions (3) Apprenticeships or employment
MIXED COURSE PATHWAY (2 years)	5 x 9 - 4 GCSE grades mainly at Grade 4/5	Three subjects from a combination of A Level and Vocational Level 3 courses Plus GCSE Maths and/or English Language <small>(if Grade 4 not yet been achieved in these)</small>	

Four A Levels may be taken by students attaining exceptional GCSE results; suitability for this should be discussed with a member of the Sixth Form team.

Courses require a minimum number of students in order to run. We aim to make any decisions about withdrawal of any course as early in 2025 as possible. We will contact any course applicants affected as soon as possible.

ART

LEVEL: A Level

EXAMINATION BOARD: Edexcel

INTRODUCTION:

The A Level Art course will develop your intellectual, imaginative, creative and intuitive capabilities. You will investigate, analyse, experiment and refine your practical, technical and expressive skills. You will develop an independence of mind and experience working with a broad range of media and techniques which will allow you to communicate your own ideas and intentions and create personal outcomes.

WHERE DOES IT LEAD?

You will build up a portfolio of work for entry on to Art Foundation courses and Degrees in Art & Design areas. Degrees include Fine Art, Graphic Design, Fashion, Architecture, Illustration, Textiles, Animation, 3D Design, Ceramics, Interior Design, Glass and Jewellery Design, Set Design, Film, and many more, leading to a range of careers in the creative industries.

COURSE DETAILS:

A Level Art comprises of 2 components:

Component 1. Personal Investigation 60%

Part 1. Practical work

Part 2. Personal study: An essay of 1000 to 3000 words which supports the practical work

Component 2. Externally set Assignment 40%

For more information:

jsassi@imberhorne.co.uk



BIOLOGY

LEVEL: A Level

EXAMINATION BOARD: AQA

INTRODUCTION:

Biology is a challenging and rewarding course that helps students develop the practical skills and knowledge necessary for a successful scientific career. It offers students the opportunity for taught and independent progression from GCSE. This specification allows all students to show what they can do, as well as being suitable for those looking to be stretched.

WHERE DOES IT LEAD?

Students who study Biology may go on to a Biology related degree course. Many of our students enter higher education in the following fields: Medicine, Veterinary Medicine, Dentistry, Healthcare, Biomedicine, Biochemistry, Molecular Biology, Genetics, Biotechnology, Physiology, Ecology and Conservation.

COURSE DETAILS:

A Level Biology builds on the concepts and skills developed at GCSE. Topics covered include: Cell Biology, Biochemistry, Physiology, Genetics and Ecology.

Units for A Level: Studied in Year 12 & Year 13 and examined in the summer of Year 13

Paper 1 Exam 35% of A Level, 2hrs

Paper 2 Exam 35% of A Level, 2hrs

Paper 3 Exam 30% of A Level, 2hrs

For more information:

dfisher@imberhorne.co.uk



CHEMISTRY

LEVEL: A Level

EXAMINATION BOARD: Edexcel

INTRODUCTION:

Chemistry is the central science and overlaps other science areas. We build on skills from GCSE Science and then throughout the course we emphasise the need to explain and understand things that happen either in the outside world or in a test tube!

WHERE DOES IT LEAD?

Chemistry is a valuable A Level for entry into a wide range of careers. Most of our A Level Chemistry students enter higher education. It is essential that students considering Medicine, Veterinary Medicine, Dentistry, Chemical Sciences and Forensic Science, study Chemistry, but many other degree courses view Chemistry as a desirable subject.

COURSE DETAILS:

We cover equal amounts of organic (carbon based), inorganic (metal based) and physical (energy based) chemistry within the qualifications.

Units for A Level - Studied in Y12 & 13 and examined in the summer of Year 13:

Unit 1 Exam 30% of A Level 1h 45mins

Unit 2 Exam 30% of A Level 1h 45mins

Unit 3 Exam 40% of A Level 2h 30mins

For more information:

smoore@imberhorne.co.uk



COMPUTER SCIENCE

LEVEL: A Level

EXAMINATION BOARD: OCR

INTRODUCTION:

Computer Science is a challenging course. At its heart it requires you to solve problems. Not just mental problems like Sudoku, or the Towers of Hanoi, but human problems too. Computer Science is a special subject that crosses the boundaries of other subjects. It is a humanities subject as well as a science and a branch of mathematics. Behind the algorithms and the technology there is also a fascinating story of human achievement.

WHERE DOES IT LEAD?

You can study Computer Science for a lot of reasons; it can be seen as a passport to a university course or a career. You will be likely to succeed if you find the subject interesting and you expect to have fun doing it. Writing computer programs gives you 'instant feedback', teaches you to persevere with problems and great satisfaction once they are finally overcome.

COURSE DETAILS:

The characteristics of processors, input, output and storage devices. Software and software development. Problem solving and programming. Exchanging data. Data types, structures and algorithms. Legal, moral, ethical and cultural issues. Computational thinking. Programming problems covering analysis, design development of a computing problem.

Assessed with two 2 hour 30 minute written papers each totalling 40% of the total A Level mark and a Programming project worth 20%.

For more information:

rhillman@imberhorne.co.uk



DESIGN & TECHNOLOGY

PRODUCT DESIGN

LEVEL: A Level

EXAMINATION BOARD: Edexcel

INTRODUCTION:

Building on the GCSE in Design and Technology, this course will extend the depth of your knowledge of technical principles, designing and making techniques, and sustainable design thinking as well as introducing some key concepts from the design and manufacturing industries. You will continue to develop your making and modelling skills, using various techniques and materials, including CAD/CAM and workshop practice; these are crucial for developing your ideas and presenting your final prototype for assessment. As a Product Design course, the content is applied to the world of design and manufacturing, using actual product examples where possible and is intended to support your design thinking and contextualise your knowledge, rather than be theory for its own sake.

WHERE DOES IT LEAD?

This course opens a wide range of career opportunities at different levels in all fields of design and engineering related pathways.

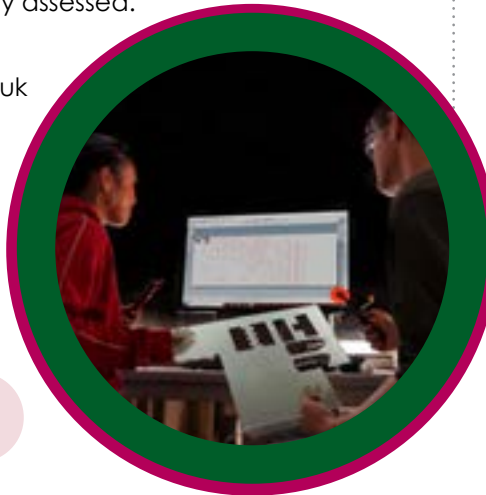
Design and Technology A level provides knowledge and experience that can be applied across multiple specialisms; graphic, interior, product or industrial design, architecture, construction and structural design, mechanical, CAD/CAM and design engineering, to name but a few. The course provides students with the skills needed to generate, present and model their ideas and supports further study or employment in all design related disciplines.

COURSE DETAILS:

- 1. Written exam** "Principles of design and technology". 2.5 hours, 50% of marks, externally assessed.
- 2. Independent design and make project.** Design portfolio and manufactured prototype, 50% of marks, internally assessed.

For more information:

rjeffs@imberhorne.co.uk



DRAMA & THEATRE

LEVEL: A Level

EXAMINATION BOARD: Edexcel

INTRODUCTION:

This two year course encourages creativity, focusing on practical work which reflects 21st Century theatre practice and develops skills that will support progression to further study of drama and a wide range of other subjects.

WHERE DOES IT LEAD?

- Drama schools, university courses that relate directly to drama and theatre.
- University courses that will benefit from the skills acquired from this GCE, for example Law, Human Resources, People Management.
- Employment where people skills are essential: Management, Retail, Nursing, Industry and Business environments.
- Employment where time management, confidence, the ability to work collaboratively and to meet deadlines are desirable.

COURSE DETAILS:

- Devising (40%)** - Creating and participating in a group devised performance as performer or designer. Capturing the process in a written portfolio.
- Text in Performance (20%)** - Participation in a monologue or duologue and a group performance as performer or designer.
- Theatre Makers in Practice (40%)** - Written Exam
Live Theatre Evaluation
Page to Stage: Realising a Performance Text
Interpreting a Performance Text

This is an exciting and creative course which has strong elements of practical and theory.

For more information:

tmooore@imberhorne.co.uk



ECONOMICS

LEVEL: A Level

EXAMINATION BOARD: Edexcel

INTRODUCTION:

Economics is all around us, present in almost every aspect of our lives. It is the study of allocation of scarce resources. Are you inquisitive about the world around you?

Why do footballers get paid so much money? What causes poverty in the world? Why have Apple been so successful?

According to Alain Anderton in the Guardian, "Economics at A Level is fundamentally about studying models: ways of looking at the world and making sense of it. Should our politicians be studying some basic economics? The answer to that is obviously yes."

WHERE DOES IT LEAD?

Economics is a highly regarded subject with many post A Level opportunities in both higher education and employment, e.g. banking and finance, in addition to post degree employment in both the private and public sector. 'Those who studied for degrees in medicine and economics were likely to take home far more in their pay packets than other graduates.' *The Guardian, 13th Apr '16*

COURSE DETAILS:

It is an examined subject that develops many skills through essays, presentations, examinations, debates and much more.

How can the UK deal with its obesity problems? What causes unemployment? Should the government still pay for a universal health service? Is there still a need for the high street and high street shops? Why do richer students have higher graduate incomes even with the same degree? When will China become the richest country in the world? What has held back development in Africa in the last 50 years? Can an iPhone really make you happy? Should students be paid for going to school?

Paper 1 - Markets and business behaviour (35%)

Paper 2 - The national and global economy (35%)

Paper 3 - Microeconomics and Macroeconomics (30%)

For more information:

cmumby@imberhorne.co.uk

ELECTRONICS

LEVEL: A Level

EXAMINATION BOARD: Eduquas

INTRODUCTION:

- develop scientific knowledge and understanding of the behaviour of electronic circuits
- develop an understanding of electronics as an engineering discipline
- develop a variety of practical, mathematical and problem-solving skills
- learn how to apply observational, practical and problem-solving skills
- develop creative and evaluative skills in the development of electronic systems

WHERE DOES IT LEAD?

A Level Electronics is seen by universities as a 'science subject'. It complements physics, computer science and maths A Levels for students who are considering engineering, applied physics or computing degrees or careers. There is a great opportunity for specialisation in many different specific fields such as avionics, bioelectronics and robotics.

COURSE DETAILS:

Year 12

- Core concepts: System synthesis, DC electrical circuits, input & output sub-systems, energy & power.
- Principles of electronics: Semiconductor components, logic systems, op-Amps, signal conversion, AC circuits & passive filters, communications systems, wireless transmission, instrumentation systems.
- Assessed through 2hr 45min written examination worth 40% of qualification.

Year 13

- Application of electronics: Timing circuits, sequential logic systems, microcontrollers, digital communications, optical communication, mains power supply systems, high power switching systems, audio systems.
- Assessed through 2hr 45min written examination worth 40% of qualification.
- Extended system design and realisation tasks: 2 tasks worth 20% of qualification - design a microcontroller system and program using assembly language, and design and create an electronic system.

For more information:

jtturner@imberhorne.co.uk



ENGLISH LANGUAGE

LEVEL: A Level

EXAMINATION BOARD: AQA

INTRODUCTION:

English Language is a stimulating and interesting course. Students who want to learn more about the origins and history of language, taking a more 'scientific' approach, will enjoy this A Level. Students will study the key concepts of the evolution of language and will explore language in its wider social and geographical contexts. Students will study varieties of English within the British Isles and other countries such as the USA. This part of the subject content also requires students to study social attitudes to, and debates about, language diversity.

WHERE DOES IT LEAD?

The course is popular and is a well regarded qualification, recognised by universities and employers as a useful, academic and significant subject. An English Language A Level creates opportunities in a wide range of areas especially those relating to the worlds of communication, the media and speech and language development. Importantly the course is also rewarding and enjoyable in its own right.

COURSE DETAILS:

There will be two examination papers, both sat in the summer of Year 13. Students will also submit a non-examination assessed essay as coursework. Students will submit a 'language investigation' including data and a piece of original writing.

There are two main areas of focus: Language, the Individual and Society and Language, Diversity and Change.

Paper 1: Language, the individual and society: 2 hours 30 minutes. 40% of A Level.

Paper 2: Language, diversity and change: 2 hours 30 minutes. 40% of A Level.

Non-exam assessment: 20% of A Level

For more information:

gstedrak@imberhorne.co.uk

ENGLISH LITERATURE

LEVEL: A Level

EXAMINATION BOARD: OCR

INTRODUCTION:

English Literature is a varied and interesting course. Students who enjoy reading, developing their ideas through discussion and close textual analysis will enjoy this popular, well regarded A Level. Students study a broad range of texts including Shakespeare, pre-1900s poetry and drama, and the dystopian genre. They gain an understanding of the contexts in which these texts were written and about the different ways they were received by contemporary audiences and can be read now.

WHERE DOES IT LEAD?

The course is very popular and is a highly regarded qualification, recognised by universities and employers as a useful, academic and significant subject. An English Literature A Level creates opportunities in a wide range of areas especially those relating to the worlds of communication in the Arts and the Media. Indeed, there are few areas of life which do not benefit from increased skills of critical analysis and personal expression. Importantly the course is also rewarding and enjoyable in its own right.

COURSE DETAILS:

There will be two examination papers both sat in the summer of Year 13. Students will also submit a non-examination assessed folder as coursework. It is comprised of a comparative essay and either a short close reading of an individual text or a piece of re-creative writing with commentary.

Paper 1: Drama and Poetry Pre-1900: 2hr 30 min examination, 40% of A Level. Closed text.

Paper 2: Comparative and Contextual Study: 2hr 30 min examination, 40% of A Level. Closed text.

Non-exam assessment: One comparative essay and either a close reading of a single text or a piece of re-creative writing with commentary 20% of A Level.

For more information:

gstedrak@imberhorne.co.uk

FILM STUDIES

LEVEL: A Level

EXAMINATION BOARD: WJEC

INTRODUCTION:

Film is one of the main cultural innovations of the 20th century and a major art form of the last hundred years. The course introduces learners to a wide variety of films in order to broaden their knowledge and understanding of film and the range of responses films can generate. Learners study mainstream American films from the past and the present as well as a range of recent and contemporary British films, American independent films and global films, both non-English language and English language. In addition they will look at a variety of historical films, documentary, experimental and short films. Students apply the knowledge gathered to develop their screenplay and filmmaking skills.

WHERE DOES IT LEAD?

The course provides a suitable progression to a range of higher education degree and vocational level courses or to employment. For those who do not wish to progress further with Film Studies, this specification also provides a coherent, engaging and culturally valuable course of study.

COURSE DETAILS:

Component 1: Varieties of film and filmmaking 35% (written examination: 2 hours and 30 mins). Students study Hollywood films from 1930-1960 and 1961-1990, American films contemporary and mainstream from 2005 onwards and two British films since 1995.

Component 2: Global filmmaking perspectives 35% written examination: 2 hours and 30 mins. Students study two global films (one European and one outside Europe), a documentary film, film movements including silent cinema and one experimental film from 1960-2000.

Component 3: Production 30% (Non-exam assessment). Learners produce a short film or screenplay and digitally photographed storyboard.

For more information:|

enewnham@imberhorne.co.uk

FRENCH

LEVEL: A Level

EXAMINATION BOARD: AQA

INTRODUCTION:

A Level French allows you to develop your understanding of spoken and written forms of French. You will be encouraged to communicate confidently, clearly and effectively in speech and in writing, with emphasis on both practical communication and grammatical accuracy. You will also develop insights into French society and culture.

WHERE DOES IT LEAD?

There are many degree courses which a language can form a part of, for example, French with Law, Management and Business Studies, Engineering and Economics. Most language degree courses offer the opportunity to work or study abroad. A Level French is also a valuable qualification for many industries such as Leisure & Tourism, Engineering, Marketing or Sales and Business.

COURSE DETAILS:

Topics

Social Issues and Trends, Political and Artistic Culture, Literary Texts or Film and Grammar.

Exams

Unit 1: Listening, reading and writing (50%).

Unit 2: Writing (literature / film and grammar) (20%).

Unit 3: Speaking (30%).

For more information:

hweller@imberhorne.co.uk



GEOGRAPHY

LEVEL: A Level

EXAMINATION BOARD: OCR

INTRODUCTION:

This course encourages students to gain enjoyment, satisfaction and a sense of achievement as they develop their knowledge and understanding of the subject. This A Level course will enable students to be inspired by their geographical understanding, to engage critically with real world issues and places and to apply their geographical knowledge, theory and skills to the world around them.

WHERE DOES IT LEAD?

Geography combines well with both arts and science subjects. It is a broad based subject that fits well for future progression. For careers in urban regeneration, energy supply, retail location, town planning, managing the effects of hazards and climate change, law, human rights, international relations or welfare, geography is an obvious choice.

COURSE DETAILS:

Topics Include: Disease Dilemmas, Coastal Landscapes, Global Migration, Changing Spaces, Making Places, Powers and Borders, Water and Carbon Cycle and finally, often most popular, Hazardous Earth. There will be 4 days of fieldwork based outside of school - 2 human geography investigations and 2 physical geography investigations.

The aims and objectives are to enable students to build on their knowledge and skills to:

- recognise and be able to analyse the complexity of people - environment interactions at all geographical scales
- improve their understanding of the ways in which values, attitudes and circumstances have an impact on the relationships between people, place and environment.

Paper 1: Physical landscapes (1hr 30min exam) 66 marks

Paper 2: Human Interactions (1hr 30min exam) 66 marks

Paper 3: Geographical Debates (2 hrs 30 min exam) 108 marks

Non-exam assessment: Independent investigation 60 marks 20%.

For more information:

dmonkton@imberhorne.co.uk

HISTORY

LEVEL: A Level

EXAMINATION BOARD: Edexcel

INTRODUCTION:

History offers an in-depth study of Britain under Stuart rule, revolving around conflict, revolution and its settlement (30%). We will also study Russia in Revolution 1894-1924 under the rule of the last Tsar and Lenin (20%). The A Level in Y13 will include the study of Civil Rights in the USA 1850-2009; from Lincoln to Obama (30%) and a personal study (20%) as your coursework, focused upon Margaret Thatcher & Modern Britain. Together these four units make up the A Level History course.

WHERE DOES IT LEAD?

This course is very popular and History is widely recognised by universities and employers as a useful, academic and very significant subject. Apart from being a recognised qualification for higher education, History is a valuable facilitating subject for entry into a wide range of professions including, Law, Politics, Journalism, the Civil Service, Management and Industry.

COURSE DETAILS:

There will be three exam papers sat in the summer of Year 13. As well as sitting one exam paper on each of the modules studied in Year 12, students will sit a further third paper on Civil Rights in the USA 1850-2009, their main area of study in Year 13. Students will also complete and submit a personal study as coursework (approximately 3,000 words). Students may choose suitable titles for research within our specified selection.

For more information:

nbooth@imberhorne.co.uk and/or

jswan@imberhorne.co.uk



MATHS

LEVEL: A Level

EXAMINATION BOARD: Edexcel

INTRODUCTION:

Mathematics is the most fundamental way we make sense of the world. It is the product of our human desire for reason, logic and aesthetic beauty. Mathematics at A-level is about problem solving using logic, analysis and generality. It provides a basis for many disciplines such as Sciences, Engineering and Finance. Maths is a good combination with Science, Geography, Economics and Music A Levels or as a complementary subject to Arts A Levels.

WHERE DOES IT LEAD?

Maths is a highly respected A level and supports progression to a wide range of degree courses and careers. All science-based degrees require good maths skills, and so too do Engineering and many Computing and Economics-based and Social Science degrees.

COURSE DETAILS:

A level Mathematics gives you the opportunity to study topics such as geometry, calculus and trigonometry (pure mathematics) and to use these ideas within the 'applied' topics such as mechanics and statistics. Mechanics is strongly linked to physics and builds on ideas of motion and forces to work out how and why objects move. Statistics allows us to make sense of the complex and variable world around us via analytical methods in order to draw reliable conclusions from 'sets' of information.

This is a two year course with all assessment being covered in Year 13. This takes the form of 3 exam papers:

Paper 1: Pure Maths A Level content.

Paper 2: Pure Maths A Level content.

Paper 3: Applied Paper covering Statistics (50%)

and Mechanics (50%).

For more information:

aibrahim@imberhorne.co.uk



MATHS (core)

LEVEL: Level 3 Certificate in Mathematical Studies

EXAMINATION BOARD: AQA

INTRODUCTION:

Core Maths is a qualification taken alongside A Levels, or other Level 3 qualifications, complementing a range of academic and technical programmes. It is effectively an AS Level qualification and it is designed for students to retain, deepen and extend their knowledge and skills from GCSE, as well as studying and applying new level three material relevant to their needs. It helps to develop students' mathematical skills and thinking and supports courses such as A Level Psychology, Sciences and Geography as well as technical and vocational qualifications.

WHERE DOES IT LEAD?

Core Maths is for students who need to be equipped for the mathematical and quantitative demands of other courses and employment, but it is also particularly relevant for those who need these skills to meet the demands of a range of courses in higher education.

COURSE DETAILS:

This is a two year course with all assessments being covered in Year 13. This takes the form of 2 exam papers covering the following content:

- interpreting solutions in the context of the problem
- understanding sources of error and bias when problem-solving
- working with data
- understanding risk and probability
- understanding variation in statistics
- using exponential functions to model growth and decay

For more information:

aibrahim@imberhorne.co.uk

MATHS (further)

LEVEL: AS/A2

EXAMINATION BOARD: Edexcel

INTRODUCTION:

This is the double option Maths choice, where you will study for two years and achieve two full A Levels in Maths. It broadens your mathematical skills and promotes deeper mathematical thinking. You will be introduced to interesting new areas of pure mathematics such as complex numbers and apply mathematics in a wider range of contexts.

WHERE DOES IT LEAD?

Further Maths is an essential requirement for further study and careers in mathematics-rich subject area such as Engineering, Science, Computing, Economics or Mathematics itself.

COURSE DETAILS:

Students cover the full A Level course to gain the Maths A Level and complete 4 exam papers for Further Pure:

AS

Paper 1 - Further Pure Mathematics.
Paper 2 - Students take one of the following four options:
Further Pure, Further Statistics, Further Mechanics, Decision Maths.

A2

Papers 1 and 2 - Cover the core part of Further Maths.
Paper 3 and 4 - There will be the opportunity to cover a mixture of Pure, Statistics, Mechanics or Decision Topics.

For more information:

aibrahim@imberhorne.co.uk



PHILOSOPHY AND ETHICS

LEVEL: A Level

EXAMINATION BOARD: AQA

INTRODUCTION:

Philosophy is for those interested in exploring deep and exciting issues about the nature and limits of knowledge, philosophical enquiries about morality, global society, religion and the mind, including artificial intelligence. If you are an inquisitive person, have an open mind, like debating and discovering a totally new way to think about and approach topics, then this course could be for you. Philosophy translates as "lover of knowledge or wisdom".

WHERE DOES IT LEAD?

The subject has "prestige" and status and is very well regarded by universities. A Level Philosophy is both "academic", but also highly "practical" and relates to our daily lives, including current affairs, and our existence as life-long learners. It prepares you well for further study in Philosophy but also compliments Politics, Economics and History to name a few. It is also an extremely useful course for professional life where ethical decision making is required in a wide range of careers such as Journalism, Medicine, Law, Police, Social Work, Advertising, Human Resources, Diplomacy/Civil Service and Teaching.

COURSE DETAILS:

Epistemology: Theory of Knowledge

Moral Philosophy: What is morally right?

Philosophy of Religion: What are the attributes of the classical conception of God?

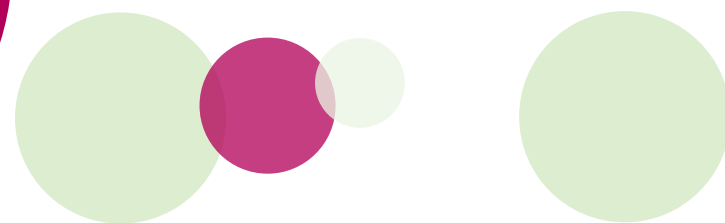
Philosophy of Mind: Can machines "think"? What is consciousness?

Assessment

Two exams of 3 hours each

For more information:

nquick@imberhorne.co.uk



PHOTOGRAPHY

LEVEL: A Level

EXAMINATION BOARD: AQA

INTRODUCTION:

The study of Photography will deepen your understanding of the visual world across different times and cultures and introduce you to the diverse roles and functions of Photography in contemporary life. You will learn how to use a digital camera; experiment with a range of photographic processes and techniques; develop digital techniques including image manipulation using Adobe Photoshop. You will research from primary and secondary sources, undertake close analysis of artists' and photographers' work and develop ideas which will lead to creative and original final pieces.

WHERE DOES IT LEAD?

Advertising, fashion, forensic photographer, commercial photographer, computer animation, visual communication, fine art and documentary photography, portraiture, sports photography, press, journalism, television, film, and teaching.

COURSE DETAILS:

Photography comprises of 2 components:
Component 1 Personal Investigation 60%.

Part 1. Practical work: Students learn to develop work based on an idea, issue, concept or theme leading to a finished outcome or a series of finished outcomes.

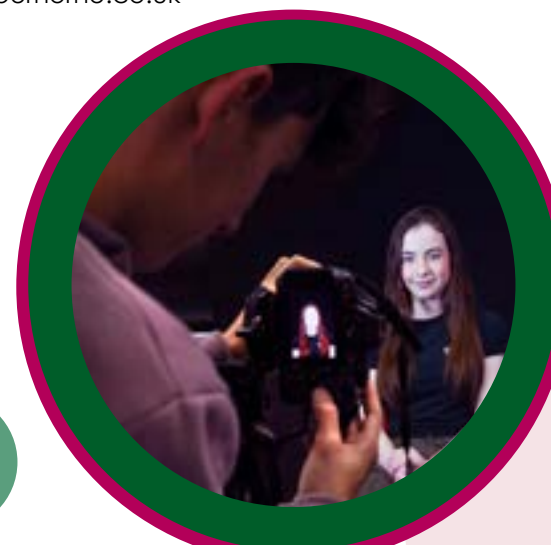
Part 2. Personal study: An essay of 1,000 to 3,000 words which supports their practical work.

Component 2 Externally set Assignment 40%.

Students respond to a stimulus, provided by AQA

For more information:

lcorke@imberhorne.co.uk



PHYSICS

LEVEL: A Level

EXAMINATION BOARD: AQA

INTRODUCTION:

A Level Physics builds on skills and knowledge gained in GCSE Science and then explores how Physics defines the way that forces and energy shape our world. It is a fast developing and exciting Science which is often at the forefront of modern technologies.

WHERE DOES IT LEAD?

Physics is an extremely well respected qualification. The main employment sectors are engineering, business, the I.T. industry, research, finance, development and medicine (some medicine courses require Physics).

COURSE DETAILS:

The A Level is composed of 8 core content areas: Measurements and their errors, Particles and Radiation, Mechanics and Materials, Waves, and Electricity, Further Mechanics and Thermal Physics, Fields and their Consequences, Nuclear Physics and an option content area most likely to be Engineering Physics.

All external exams at the end of Year 13:

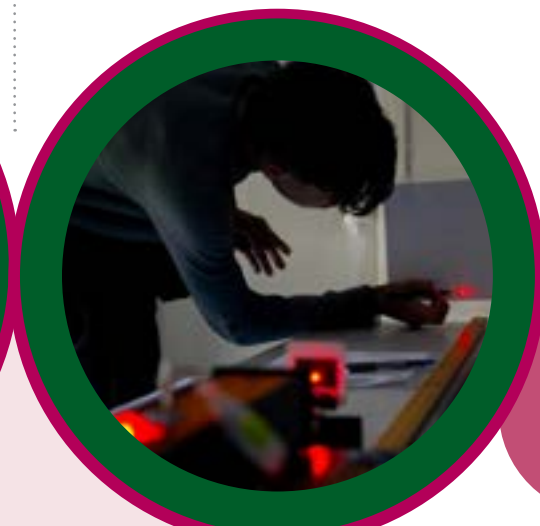
Paper 1: 34% of A Level, 2 hours, assessing the first 5 core content areas.

Paper 2: 34% of A Level, 2 hours, assessing the additional 3 core content areas.

Paper 3: 32% of A Level, 2 hours, assessing the option content area and practical skills and data analysis.

For more information:

reveleigh@imberhorne.co.uk



POLITICS

LEVEL: A Level

EXAMINATION BOARD: Edexcel

INTRODUCTION:

Politics appeals to students keen to understand more about current affairs, the British political system and how the global political system works. The Year 12 course concentrates on the British political system in terms 1 and 2, then in term 3 we analyse some core political ideologies and their development. In Year 13, we spend 2 terms exploring global politics in depth e.g. exploring themes such as the climate change emergency, increasing global instability and the increasing tensions between the USA, China, Russia and the EU.

WHERE DOES IT LEAD?

The subject combines well with a wide range of other subjects and can lead to many post GCE opportunities in both higher education and employment in Law, the Civil Service, Journalism etc. At university, you can study for a Politics degree or one in International Relations/Global Politics, as well as related degrees such as Middle Eastern/Russian/Chinese studies, or PPE (Politics, Philosophy and Economics).

COURSE DETAILS:

Year 12

We will explore how democracy works and fails to work in the UK and how the UK is governed. In term 3 we will start to study 3 political ideologies - namely Liberalism, Conservatism and Socialism. This will briefly continue into the start of Year 13.

Year 13

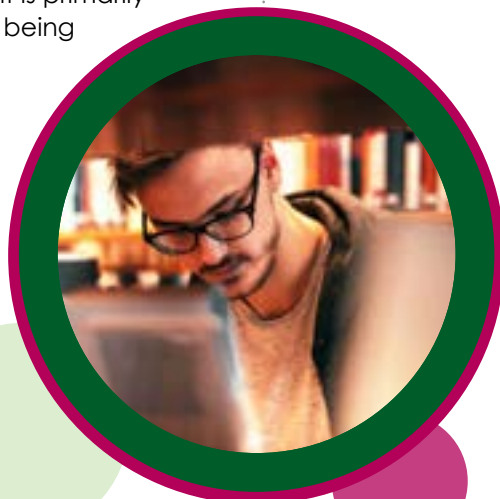
The main focus of Year 13 Politics will be the analysis and evaluation of various aspects of the global political system and the many issues it faces regarding the economy, human rights, the environment and terrorism. We also explore ecologism as an ideology.

Assessment

Three 2-hour long papers, assessment is primarily through essays, with some questions being data-response in style.

For more information:

bferguson@imberhorne.co.uk



PSYCHOLOGY

LEVEL: A Level

EXAMINATION BOARD: AQA

INTRODUCTION:

Psychology is the scientific study of the mind and behaviour. Therefore students study theories which try to explain why we do what we do. For example, how accurate are eye witness testimonies? Or, what factors affect our obedience? We apply these theories and pieces of research to everyday life, making it relevant to everyone.

WHERE DOES IT LEAD?

The course is well suited to students who have a genuine interest in understanding human behaviour and the scientific analysis of it. This can lead to a related degree (usually a BSc), or work in many other areas, since the skills obtained are transferable. A Psychology degree can lead to work in criminal, forensic, educational, clinical, counselling, sport, environmental or occupational psychology as well as being applicable to other careers, such as media.

COURSE DETAILS:

In the first year, students will study introductory topics in Psychology, such as Memory, Attachment and Social Influence. They will also be looking at how behaviour is studied by psychologists and different approaches to explaining behaviour.

Further to this, in the second year, students will get the opportunity to study other topics such as Aggression, Schizophrenia and Gender.

Paper 1 - 33.3% of A Level, 2 hours: Introductory topics in Psychology.

Paper 2 - 33.3% of A Level, 2 hours: Psychology in context.

Paper 3 - 33.3% of A Level, 2 hours: Issues and options in Psychology.

For more information:

eforbes-turner@imberhorne.co.uk

SOCIOLOGY

LEVEL: A Level

EXAMINATION BOARD: AQA

INTRODUCTION:

Sociology is about modern society and people's behaviour. It searches for explanations for the differences and inequalities that exist by studying a wide range of social issues relating to areas such as the mass media, education, globalisation, crime and deviance. The course will encourage you to develop and sharpen your abilities to think critically, and analyse the true nature of modern British society. You will learn about different theoretical perspectives such as feminism and Marxism, preparing you for your studies at university.

WHERE DOES IT LEAD?

Sociology is a respected academic subject at college or university, as it gives you a better understanding of behaviour in your own society. It is very useful in careers such as nursing, teaching, the police, social work therapies, as well as management, social research, policy making, and many more. You can study 'pure' sociology at university, or related disciplines such as social policy, criminology, cultural studies and development studies.

COURSE DETAILS:

3 papers, each 2 hours long, each worth 33.3% of A Level.

Paper 1: Education with Theory & Methods.

Paper 2: Culture & Identity plus the Mass Media.

Paper 3: Crime & Deviance with Theory & Methods

For more information:

bferguson@imberhorne.co.uk



SPANISH

LEVEL: A Level

EXAMINATION BOARD: AQA

INTRODUCTION:

Studying Spanish at A Level will give you the opportunity to develop the understanding of both the spoken and written language that you have mastered for GCSE. You will be expected to take an active interest in what is happening in the Spanish-speaking world. By studying current affairs of both Spanish and Latin America you will gain insight into the society and culture of some fascinating countries. You will also study a book and a film in Spanish.

WHERE DOES IT LEAD?

The ability to speak Spanish opens up a vast job market. Degree courses at university involving any career, e.g. Law, Engineering and teaching can very often be coupled with Spanish to open even more doors. Spanish is very much in demand for many jobs at a high level.

COURSE DETAILS:

Topics

Social Issues and Trends, Political and Artistic Culture, Literary Texts or Film and Grammar.

Exams:

Unit 1: Listening, reading and writing (50%).

Unit 2: Writing (literature / film and grammar) (20%).

Unit 3: Speaking (30%).

For more information:

lhutcheson@imberhorne.co.uk

Here is
the start of our
**vocational
courses**



BUSINESS (single)

LEVEL: 3 Diploma BTEC National

EXAMINATION BOARD: Edexcel

INTRODUCTION:

This course introduces students to the world of business with a look at all key aspects of business for example, finance and marketing etc. This course is assessed in three ways, an assignment, a task and a written exam.

WHERE DOES IT LEAD?

On completing your course you could either go into employment or go on to university. A Business course is a popular option for specialising in a specific area such as marketing, finance or management. This course has the UCAS point's equivalence to one A Level. This course provides you with key skills to be used at any stage in life for example job interviews, finance control.

COURSE DETAILS:

BTEC Nationals are Level 3 qualifications designed to provide highly specialist work-related qualifications in a range of vocational sectors. The course offers the opportunity to feel closer to the world of work and see the relevance of studying various areas of business practice in context. You will develop the knowledge, skills and understanding of business including the importance of good communication. You will investigate various businesses and their practice including marketing, finance and resources by research, writing reports and giving presentations. The course will enable you to gain self-confidence, learn the benefits of teamwork, improve your computer skills and gain further qualifications.

ASSESSMENT:

Year 12

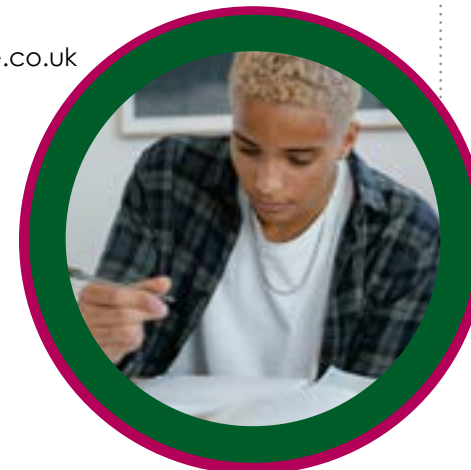
Unit 1: Exploring business (internally assessed coursework)
Unit 2: Developing a marketing campaign (written task).

Year 13

Unit 3: Personal and business finance (written exam).
Unit 8: Recruitment and selection (internally assessed coursework).

For more information:

cmumby@imberhome.co.uk



BUSINESS (double)

LEVEL: 3 Applied Diploma

EXAMINATION BOARD: Edexcel

INTRODUCTION:

On completing your course you could either go into employment or go on to university. A Business course is a popular option for specialising in a specific area such as marketing, finance or management. This course has the UCAS point's equivalence to two A Levels. This course provides you with key skills to be used at any stage in life for example job interviews, finance control etc.

WHERE DOES IT LEAD?

BTEC Nationals are Level 3 qualifications designed to provide highly specialist work-related qualifications in a range of vocational sectors. The course offers the opportunity to feel closer to the world of work and see the relevance of studying various areas of business practice in context. You will develop the knowledge, skills and understanding of business including the importance of good communication. You will investigate various businesses and their practice including marketing, finance and resources by research, writing reports and giving presentations. The course will enable you to gain self-confidence, learn the benefits of teamwork, improve your computer skills and gain further qualifications.

COURSE DETAILS:

ASSESSMENT:

Year 12

Unit 1: Exploring business (internally assessed coursework).
Unit 2: Developing a marketing campaign (written task).
Unit 4: Managing an event (internally assessed coursework).
Unit 5: International business (both internally assessed coursework).

Year 13

Unit 3: Personal and business finance (written exam).
Unit 6: Principals on management (written task).
Unit 8: Recruitment and selection (internally assessed coursework).
Unit 16: Visual merchandising (internally assessed coursework).

For more information;j

cmumby@imberhome.co.uk

CRIMINOLOGY (single)

LEVEL: 3 Applied Diploma

EXAMINATION BOARD: WJEC

INTRODUCTION:

Criminology is the scientific study of crime and criminals. You will investigate the different techniques used in a criminal investigation such as forensics, policing and the judiciary process. You will also consider the effectiveness of different strategies used to reduce criminality from custodial sentences and the impact of community orders. You will study the psychological and sociological theories of crime as well as how crime is perceived in society and the impact of the media and crime statistics.

WHERE DOES IT LEAD?

The WJEC Level 3 Applied Diploma in Criminology provides learners with an introduction to criminal justice and to give a context for humanities learning. Criminology develops the understanding to support entry to higher education courses in the humanities sector, and onto careers in the criminal justice sector, social and probation work and sociology and psychology.

COURSE DETAILS:

This applied general qualification is a WJEC Level 3 Diploma (equivalent to one full A Level).

ASSESSMENT:

Assessment is through written exams and controlled assessment.

Unit 1 and 3 will be assessed internally through controlled assessment, and units 2 and 4 assessed externally by a 90 minute exam for each.

For more information:

eforbes-turner@imberhome.co.uk



FOOD SCIENCE & NUTRITION (single)

LEVEL: 3 Diploma

EXAMINATION BOARD: WJEC

INTRODUCTION:

This is a progression from GCSE Food preparation and Nutrition where you will build on and extend your practical food preparation skills and knowledge. The WJEC Level 3 Diploma in Food Science and Nutrition has been designed to provide learners with underpinning knowledge, understanding and skills to progress to further study and training. It offers exciting and interesting experiences through applied learning and understanding purposeful contexts linked to the food production industry. It also requires you to consider how the use and application of your learning impacts on yourself, other individuals, employers, society and the environment.

WHERE DOES IT LEAD?

An understanding of food science and nutrition is relevant to many industries and job roles. Care providers and nutritionists in hospitals use this knowledge, as do sports coaches and fitness instructors. Hotels and restaurants, food manufacturers and government agencies also use this understanding to develop menus, food products and policies that support healthy eating initiatives. Many employment opportunities and further education within the field of food science and nutrition will be available to you if you study this qualification.

COURSE DETAILS:

You will complete three units: two mandatory (units 1 and 2) and one optional (units 3 or 4)

Unit 1: Meeting the Nutritional Needs of Specific Groups - 25% Exam and 25% Non Exam Assessment

Unit 2: Ensuring Food is Safe to Eat = 25% Exam

Unit 3: Experimenting to Solve Food Production = 25% Non Exam Assessment

Unit 4: Current Issues in Food Science and Nutrition = 25% Non Exam Assessment

For more information:

mlawlor@imberhome.co.uk

HEALTH & SOCIAL CARE (single)

LEVEL: OCR Level 3 Alternative Academic Qualification

Cambridge Advanced National in Health and Social Care (Extended Certificate)

EXAMINATION BOARD: OCR

INTRODUCTION:

The course gives experience of various aspects of different care sectors. You will investigate the positive working relationships that practitioners need to establish with individuals they encounter in their day to day work. You will also look at factors that affect these relationships. You will have the opportunity to go into the community to carry out research with different client groups. The course offers the opportunity to study the needs of different members of the community. You will learn through a variety of methods; interviewing people, putting together case studies, listening to outside speakers and giving presentations. The course will enable you to gain self-confidence, learn the benefits of teamwork, improve your computer and research skills and gain further qualifications.

WHERE DOES IT LEAD?

On completion of this course, both employment or further training are options. Past students are studying and/or working as Operating Department Practitioners, Occupational Therapists, Physiotherapists, Mental Health and Adult Nurses. Some students choose to embark on employment based training and many currently train 'on the job' completing apprenticeships or other qualifications in nurseries, pre-schools and care agencies.

COURSE DETAILS:

Year 12 (Certificate)

Principles of health and social care (exam Jan 2026), Person-centred approach to care (NEA), Supporting people with mental health conditions (NEA)

Year 13 (Extended certificate)

Investigating public health (NEA), Supporting people in relation to sexual health, pregnancy and postnatal health (NEA), Anatomy and physiology for health and social care (exam June 2026)

Non examined assessment units (NEA) will be assessed by moderators in both January and June of each year.

For more information:

scollyer@imberhome.co.uk

MUSIC (single)

LEVEL: Level 3 BTEC Extended Certificate (Performance)

EXAMINATION BOARD: Edexcel

INTRODUCTION:

Equivalent to one A Level, the BTEC National in Music combines up-to-date industry knowledge with the right balance of the practical, research and behavioural skills students need to succeed in higher education and in their careers.

WHERE DOES IT LEAD?

It provides access to Higher Education in Music, the sound and music industry and related fields. BTEC students can be better prepared in terms of the independent studying required at degree level, due to the portfolio-based nature of BTEC courses. The management and self-organisation skills students will pick up on a BTEC course can also give an added edge.

COURSE DETAILS:

The BTEC course is an excellent bridge for students who want to continue their musical education beyond GCSE and further their understanding of technological aspects of music and the music industry. BTEC Music Level 3 will extend the skills acquired at GCSE, allowing specialist interest to flourish. It gives students a foundation for pursuing a music career. The BTEC course structure will offer the scope for musicians to make a wider selection in the Sixth Form than ever before. The focus of this course is centred around performance, musical literacy and theoretical knowledge through composition, performance and professional and reflective practice.

For more information:

williams@imberhome.co.uk



CREATIVE MEDIA PRODUCTION (single)

LEVEL: BTEC Level 3 National Extended Certificate

EXAMINATION BOARD: Pearson

INTRODUCTION:

The course aims to provide students with learning which is relevant to living in the modern world, to make them aware of the media industries' influence on everyday lives. We also aim to enable and facilitate the development of skills, which can be applied in a range of different career pathways. Media studies is an engaging and exciting subject to immerse yourself within. Over recent years a lot has changed in our world with 'The Media' being at the forefront of this.

WHERE DOES IT LEAD?

Excellent preparation for all careers involving communication skills. The high level of critical analysis in written debate provides a firm academic foundation for many higher education courses. Media Studies provides students with a platform to express their views and opinions and develop key analytical skills. Subjects which go well with Media Studies are English Literature, Sociology, Theatre Studies, Art & Design, Economics, and Business.

COURSE DETAILS:

The qualification provides a coherent introduction to the study of creative digital media production at this level. Learners develop an understanding of the media industry through analysing media representations and pitching and producing media projects.



Unit 1 - Media Representations. In this unit, you will study a range of media from different sectors, such as music videos, short film extracts, animation, news programmes, websites, digital games and print adverts in order to explore how meaning, messages and values are constructed through formal and stylistic elements. Two hour exam.

Unit 4 - Pre Production Portfolio. You will gain an understanding of the requirements of the planning stage, from finance and logistics to regulations. Your investigations will help you develop the pre-production skills and experience needed to carry out your own tasks and to produce a digital media product. You will create a portfolio and manage the pre-production for your own creative media production.

Unit 8 - Responding to a commission. This task is set by Pearson and completed under supervised conditions. Plus one of two optional units - Film Production or Magazine Production.

Unit 10 - Media Production. Students will have the opportunity to realise their plans from Unit 4. Following on from the same brief students will be able to put their designs and ideas into practice through the production of a 5 minute short film.

For more information:

enewnham@imberhome.co.uk

PERFORMING ARTS (double)

LEVEL: Level 3 BTEC National Diploma

EXAMINATION BOARD: Edexcel

INTRODUCTION:

This is an intensive practical course and over the two years you will study and develop a wide range of performance skills in the different Performing Arts disciplines..

WHERE DOES IT LEAD?

The course provides useful preparation for a range of careers in the Performing Arts Industry as performers in production roles or in arts administration. It is also a useful grounding for a range of other careers including education, media, sales, public relations, event anagement, advertising and marketing. There is a strong research element to this course and it is also therefore ideal preparation for a range of university degree courses, not just in the area of the performing arts.

COURSE DETAILS:

Through practical workshops you will learn techniques in acting, movement and voice. These skills will then be developed to a more advanced level through the exploration of a range of texts, performance styles, theatrical practitioners and themes. Over the two years, you will take part in a wide range of public performances to different audiences in order to demonstrate your skills. You will also undertake research, analysis and evaluation of your own work as well as those of past and present theatrical performers.

You will study 8 units over the course of 2 years (including: Investigating Theatre Practitioners, Developing Skills and Techniques for Live Performance, Group Performance Workshop, Performing Arts in the Community, Individual Performance Commission and Final Live Performance to an audience). These are assessed both internally and externally through practical performance work, written coursework and controlled condition exams.

For more information:

hcoffey@imberhome.co.uk



APPLIED SCIENCE (single)

LEVEL: Level 3 BTEC Extended Certificate Single Award

EXAMINATION BOARD: Edexcel

INTRODUCTION:

BTEC Science studies Biology, Chemistry and Physics, set in vocational contexts. You should consider this course if you are enthusiastic about science but would find traditional A Level sciences too challenging or are unlikely to meet their entry requirements.

WHERE DOES IT LEAD?

BTEC Science is useful for anyone entering employment in the science sector, for example, in a laboratory or as a health care professional. The qualification is widely accepted by employers and universities for courses such as forensic science, biomedical science, healthcare careers including nursing and midwifery, veterinary nursing and engineering.

COURSE DETAILS:

Year 12 - National Certificate in Applied Science. Unit 1: Principles and Applications of Science. Assessed by a written examination. Unit 2: Practical Scientific Procedures & Techniques. An internally assessed assignment. Year 13. National Extended Certificate Unit 3: Science Investigation Skills. An externally assessed set task. Plus one internally assessed unit that is chosen for you from options such as Physiology, Biochemistry, Inorganic Chemistry or Electrical Circuits.

For more information:

reveleigh@imberhome.co.uk



SPORT & EXERCISE SCIENCES (single & double)

LEVEL: Level 3 BTEC NQF National Diploma or Foundation Diploma (Double & Single Award)

EXAMINATION BOARD: Edexcel

INTRODUCTION:

The NQF BTEC National in Sport & Exercise Sciences course is designed to enable students to either enter employment or progress to university. Teaching, Sports Science, Sports Therapy and Leisure Management are popular options, as well as Sports Coaching, Leisure Assistants and a vast range of other professionals within the world of sports industry.

WHERE DOES IT LEAD?

Sport and exercise scientists continue to be a growing presence in the world of sport and as we look to the future all the signs suggest that their influence in sport will increase. From the elite performers' reliance on a large support team, to the casual gym user's use of ergogenic aids, sport and exercise sciences' core elements of anatomy, physiology, psychology and bio-mechanics are seen in almost every aspect of, and activity within, the sport and active leisure sector. This qualification can suit learners who are intending to study towards a degree in the sport and exercise sector.

COURSE DETAILS:

Equivalent to two A Levels (Double); one A Level (Single); Year 12 Mandatory units: Sport and Exercise Physiology; Functional Anatomy; Applied Sport and Exercise Psychology.

Year 13 Mandatory units: Field and Laboratory-based Fitness Testing; Applied Research Methods in Sport and Exercise Science; Coaching for Performance and Fitness

Chosen Optional Units: Sociocultural Issues in Sport and Exercise, and Biomechanics. ***(Italics indicate the Single course units / Double students complete all units)***

For more information:

nhughes@imberhorne.co.uk



ENTRY REQUIREMENTS

Type	Subject	Subject GCSE 4+ in English required	GCSE 4+ in Maths required	Additional entry requirements
GCE A LEVEL	Art	•	•	4+ GCSE Art
GCE A LEVEL	Biology	•	•	77+ GCSE Science (Grade 6 considered by department), 6+ in GCSE Maths
GCE A LEVEL	Chemistry	•	•	77+ GCSE Science (Grade 6 considered by department), 6+ in GCSE Maths
GCE A LEVEL	Computer Science	•	•	5+ GCSE Computing
GCE A LEVEL	Design & Technology	•	•	5+ GCSE Design Technology
GCE A LEVEL	Drama & Theatre	•	•	6+ GCSE Drama & 6+ GCSE English Lang (Grade 5 considered by department)
GCE A LEVEL	Economics	•	•	6+ GCSE English Language or Literature, 5+ GCSE Maths (Grade 5 English considered by department)
GCE A LEVEL	Electronics	•	•	66+ GCSE Science, 5+ in GCSE Maths
GCE A LEVEL	English Language	•	•	6+ GCSE English Language or Literature
GCE A LEVEL	English Literature	•	•	6+ GCSE English Language or Literature
GCE A LEVEL	Film Studies	•	•	5+ GCSE English Language and Literature
GCE A LEVEL	French	•	•	7+ GCSE French, 6+ in GCSE English Literature or Language
GCE A LEVEL	Geography	•	•	6+ GCSE Geography
GCE A LEVEL	History	•	•	6+ GCSE History
GCE A LEVEL	Maths	•	•	7+ GCSE Maths
GCE A LEVEL	Maths (Further)	•	•	8+ GCSE Maths
LEVEL 3	Maths (Core)	•	•	5+ GCSE Maths
GCE A LEVEL	Philosophy	•	•	6+ English Language or Literature
GCE A LEVEL	Photography	•	•	4+ GCSE Art*
GCE A LEVEL	Physics	•	•	77+ GCSE Science, 7+ in GCSE Maths (Grade 6 considered by department)
GCE A LEVEL	Politics	•	•	5+ GCSE English Language or Literature
GCE A LEVEL	Psychology	•	•	6+ GCSE Science
GCE A LEVEL	Sociology	•	•	5+ GCSE English Language or Literature
GCE A LEVEL	Spanish	•	•	7+ GCSE Spanish, 6+ in GCSE English Literature or Language
BTEC LEVEL 3	Applied Science (Single)	•	•	44+ GCSE Science
BTEC LEVEL 3	Business Studies Level 3 (Single or Double)	•	•	4+ in GCSE Business or Pass at Level 2 BTEC*
BTEC LEVEL 3	Creative Media (Single)	•	•	4+ English Language & Literature, Merit in Level 2 Creative Media*
WJEC LEVEL 3	Criminology (Single)	•	•	4+ GCSE English Language and Literature
WJEC LEVEL 3	Food & Nutrition	•	•	4+ GCSE Food Technology 44+ GCSE Science
CTEC LEVEL 3	Health & Social Care (Single)	•	•	44+ GCSE Science, 4+ in English Language
BTEC LEVEL 3	Music (Single)	•	•	4+ GCSE Music (if taken) & audition
BTEC LEVEL 3	Performing Arts (Double)	•	•	4+ in GCSE Dance, Drama or Music & audition
BTEC LEVEL 3	Sport & Exercise Science (Single or Double)	•	•	44+ Science

(*if taken)

Opportunities await you...

Student Events

We hold social events throughout the year including a fancy dress sports day, quiz and music shows, charity fundraisers and the Leavers' Prom. You can get involved in planning or just enjoy!

Drama and Music

Why not take a role in school productions or join a Sixth Form Band.

Debating

Join the student-led Debating Society and improve your ability to think for yourself, argue intelligently and communicate eloquently.

National Competitions

Compete in competitions such as the UKMT Maths Challenge, Youth Speaks and Science Olympiads.

Volunteering

Make sure your UCAS and apprenticeship applications stand out by volunteering. You could run activities for students at Key Stage 3, become a classroom ambassador or an adult helper on many of our trips and visits for younger students. **We have opportunities at three local primary schools for Sixth Form volunteers too.**

Oxbridge and early Applicants Programme

Benefit from our small group preparation for applications to Oxbridge or to study Medicine and Dentistry and ensure your chances are the best they can be.

Duke of Edinburgh GOLD

We are really proud of our Duke of Edinburgh programme and we offer Gold award training to our Sixth Form students who wish to progress from the Silver award they did in Year 11.



Imberhorne Lane
East Grinstead, West Sussex
RH19 1QY

Enquiries
sixthform@imberhorne.co.uk

Sixth Form
T 01342 310986

